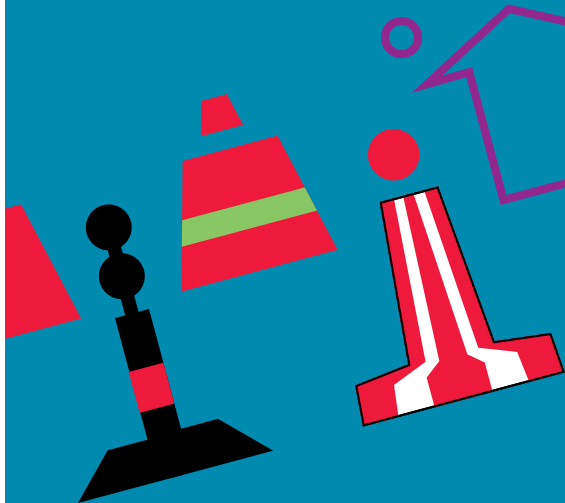


# Lateral Buoyage Guide



A Bureau Veritas Group Company

Tel: +44 (0)1224 577070  
[www.MAC-L.com](http://www.MAC-L.com)  
[info@MAC-L.com](mailto:info@MAC-L.com)



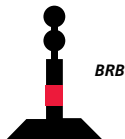
# Lateral Buoyage IALA 'A'



Port Hand Mark  
Any FI R except (2+1)



Preferred Channel  
is to Starboard  
FI (2+1) R



Isolated Danger Mark  
FI (2)

Keep buoy to  
**Port** or **Starboard**

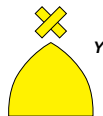
Marks can be buoys,  
posts or towers



Safe Water Mark  
Iso, Oc  
L FI 10s or Mo(A)



Direction of Buoyage



Special Marks  
Yellow, rhythm not  
used for white lights



Starboard Hand Mark  
Any FI G except (2+1)



Preferred Channel  
is to Port  
FI (2+1) G



Emergency  
Wreck Buoy  
Alt FI Bu Y